



Lakehead UNIVERSITY

THUNDER BAY & ORILLIA, ONTARIO, CANADA

ENGLISH INNOVATION PROGRAMS

Studying at Lakehead University is not your typical university experience.

We offer exceptional and innovative English language programs throughout the year at both of our safe and supportive campuses located in the heart of Canada. Learning English at Lakehead is enriched with exciting thematic experiences that enhance your language studies—all while you enjoy Canada's most famous attractions and the great outdoors.



TWO VIBRANT CAMPUSES — TWO GREAT CANADIAN ADVENTURES



ORILLIA CAMPUS

Nestled between the lakes and forests near the Greater Toronto Area (GTA), the Orillia campus is built to LEED® standards for environmental sustainability. The campus boasts cutting-edge laboratories, classrooms filled with natural light, and a vibrant student Learning Commons. Not only will you enjoy all that the City of Orillia offers in arts, culture, music and recreation, but you will be able to take advantage of Orillia's proximity to some of Canada's most iconic tourist attractions such as the CN Tower and Niagara Falls.

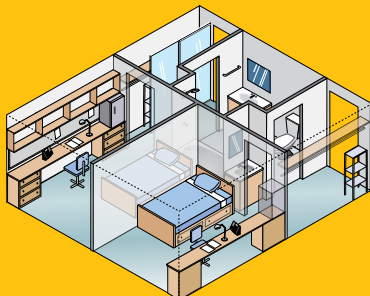


THUNDER BAY CAMPUS

Study English in the heart of a campus that offers the best of not only a high tech learning environment, but also the natural environment. With an array of student services located centrally on campus, you will have access to extensive supports and recreational facilities within steps of residence, your classes, and the scenic outdoors. While in Thunder Bay, you will experience Canada's breathtaking northern wilderness combined with a dynamic city life.

RESIDENCE LIVING

Have the ultimate university experience by living on campus. Enjoy your home away from home in our comfortable rooms, and the convenience of on-site cafeterias offering cuisine for every palate and preference.



← ORILLIA CAMPUS

Single Dorm Room 16.5m²

- Single room accommodation with adjoining bathroom shared with one other person
- Wifi, mini-fridge
- Laundry facilities
- Social lounge, study rooms

THUNDER BAY CAMPUS →

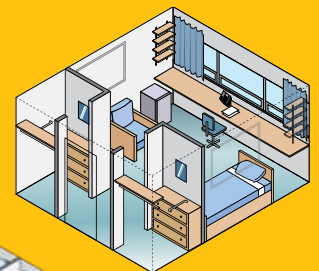
Apartment 77m²

- Private bedrooms
- Shared living room
- 2 washrooms
- Full kitchen

THUNDER BAY CAMPUS →

Single Dorm Room 18m²

- Residence halls
- Wifi, mini-fridge
- Shared laundry, washrooms and lounge



ROOM TYPE ASSIGNMENTS
SUBJECT TO AVAILABILITY.



English Innovation Programs – where language meets innovation at Lakehead University! Our programs are custom-built to fit your needs, focusing on key tracks designed to help you succeed in your chosen field and thrive in today’s competitive world. Join us on an exciting journey as we dive into language and culture, giving you the confidence to communicate effectively in any professional setting.

PROGRAMS INCLUDE:

- Placement test (if no official English proficiency score is provided)
- Health insurance (Guard.me)
- Airport pick-up / drop-off
- On-campus residence
- Meal plan: 3 meals per day from Monday to Friday and 2 meals per day on weekends
- Public transit pass
- 20-25 hours a week of instruction
- Up to 15 hours of cultural and recreational experiences
- Course materials
- A micro-credential certificate from Lakehead University
- Graduation ceremony
- Final Report/Transcript

TRACKS TO CHOOSE FROM:

- University English Immersion Track T O
- Exploring Indigenous and Settler Cultures T O
- Innovation, Leadership and English for Business T O
- Innovation, Leadership and English for Engineering T
- Innovation, Leadership and English for Applied Sciences and Technology T O
- Enhancing Global Competency with English Language Learning and Career Development T O



LEARN MORE

T Thunder Bay Campus
O Orillia Campus

SAMPLE EXTRACURRICULAR ACTIVITIES:

- Toronto Experience: CN Tower, Ripley’s Aquarium, Kensington Market O
- Niagara Experience: Marineland & Game Farm, Behind the Falls experience O
- Thunder Bay Experience: Kakabeka Falls, Fort William Historical Park, Thunder Country Market T

Optional add-ons are available at an additional cost, are subject to regional offerings, and are fully customizable.

NOTE: Recommended minimum IELTS score of 5.0 (or equivalent); Minimum 12 students per session; We accept closed groups; however, if you have a group of less than 12, we may combine it with another group; \$250 non-refundable deposit due at time of application.

START DATES:

- May 5, 2025
- May 26, 2025
- June 16, 2025
- July 7, 2025
- July 28, 2025

Application Deadline: April 7, 2025

PRICING & MORE INFORMATION:

For more information on the program, including pricing, please contact:

international.english@lakeheadu.ca
+1 807 343 8010, ext. 7888
lakeheadu.ca/english-innovation-programs

ASK US ABOUT:

- NEW! Boreal Adventure Language Camp (Ages 15-17) in Summer 2025
- Our popular Train the Trainer Program
- Academic English Program (AEP)
- Visiting International Students Program
- Online program delivery